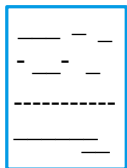


Lesson 4 Skills Practice

Simulations

1. **QUIZZES** Describe a situation that you could use to answer a 15-question quiz, if five questions are true or false questions.




A class is taking a quiz on a piece of paper that has 15 questions in total. 5 out of 15 questions are true or false questions.

2. **PRIZES** During the grand opening of a fast food restaurant, every person that comes to the restaurant receives a prize. There are 6 different prizes. Describe a model that could be used to simulate which prizes the first 75 customers will receive.

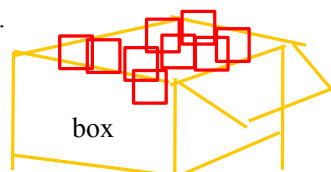
Each of the different prizes are gift cards for the restaurant. Each gift card has a different value. They will have each gift card in a bag and pick it out randomly.




 = gift card

3. **STUDENT COUNCIL** Mrs. Corley wants to randomly choose 3 students to represent her homeroom on student council. There are 30 students in the class. Describe a model that could be used to simulate this situation.

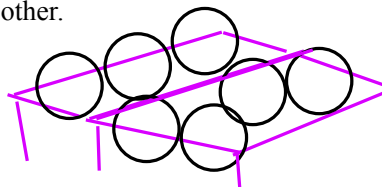
She will pick out 3 tickets from a box randomly.



 = ticket

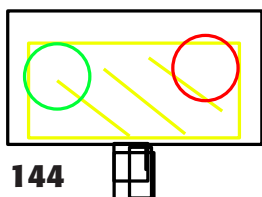
4. **SALES** A music store has determined that 65% of customers who buy a compact disc buy a pop music compact disc. Describe a model that you could use to simulate a CD purchase.


They put the compact discs and the pop music compact discs in the same section close to each other.




5. **SANDWICHES** A sandwich shop offers 6 different types of sandwiches on either white or wheat bread. If each type of sandwich and bread is equally likely to be chosen by a customer, describe a model that could be used to simulate the orders of the next 10 customers.

The 6 different types of sandwiches are put as examples on a TV with half of them with white bread and the other half with wheat bread.



 = wheat bread

 = white bread

