

*LearnMusicTheory.net*  
**1.25 Eastman Counting System**

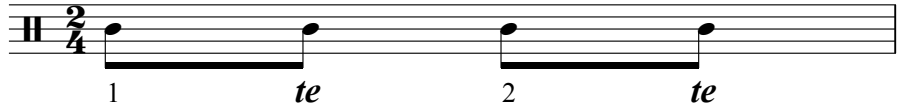
**Dividing the beat into 2 or 4**

When the beat is divided into two even parts or four even parts, as in simple time signatures **OR** duplets/quadruplets in compound time, the following syllables are used to count the rhythm:

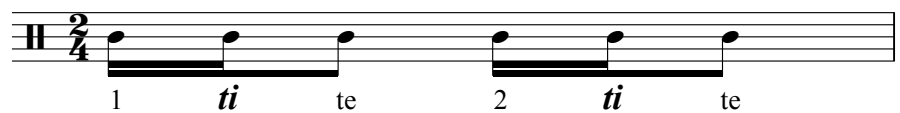
Notes on the beat use the number of the beat:



Notes on the second half of the beat use **te** ("tay"):



Notes on the second fourth of the beat use **ti** ("tee"):



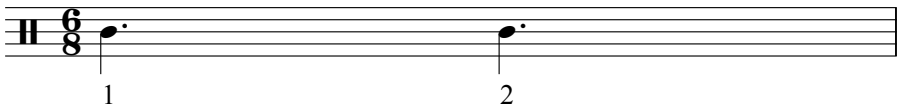
All other notes use **ta** ("tah"):



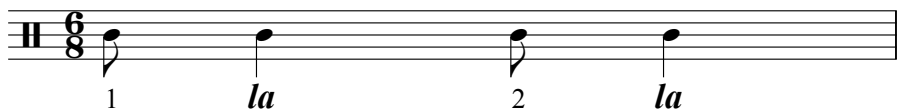
**Dividing the beat into 3 or 6**

When the beat is divided into three even parts or six even parts, as in compound time signatures **OR** triplets/sextuplets in simple time, the following syllables are used to count the rhythm:

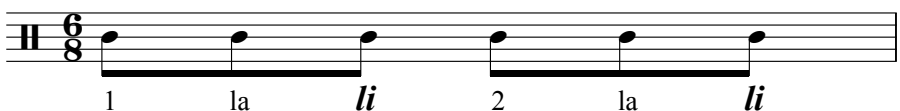
Notes on the beat use the number of the beat:



Notes on the second third of the beat use **la** ("lah"):



Notes on the last third of the beat use **li** ("lee"):



All other notes use **ta** ("tah"):



Any note not covered by the above rules will use the syllable **ta**.