

# All the Way My Savior Leads Me

TRADITIONAL HYMN  
Arrangement and Additional Lyrics by  
CHRIS TOMLIN and  
MATT REDMAN

Capo 1 (G) Gently and sweetly ♩ = 64

VERSE

Keyboard  
(Guitar)

A<sup>b</sup>  
(G)

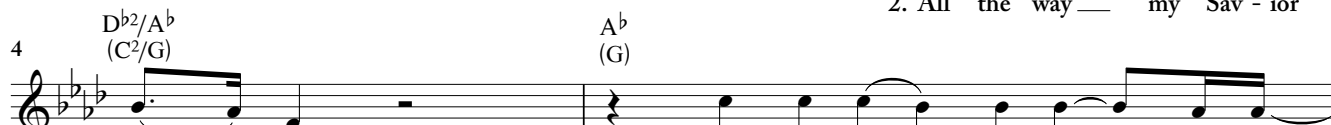
D<sup>b2</sup>/A<sup>b</sup>  
(C<sup>2</sup>/G)

A<sup>b</sup>  
(G)

*p*

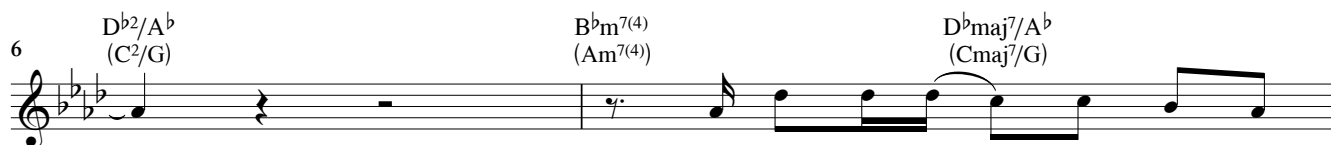


1. All the way — my Sav - ior  
2. All the way — my Sav - ior



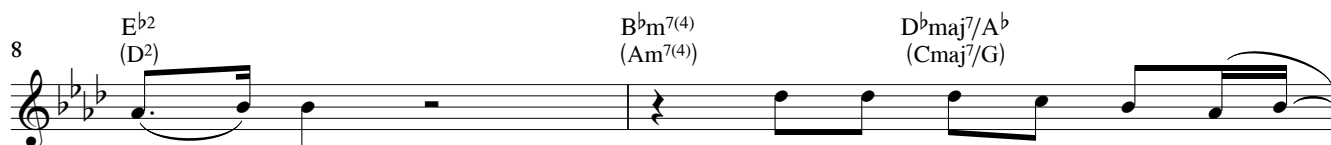
leads — me;  
leads — me;

who have I — to ask — be - side? —  
O, the full - ness of — His love! —



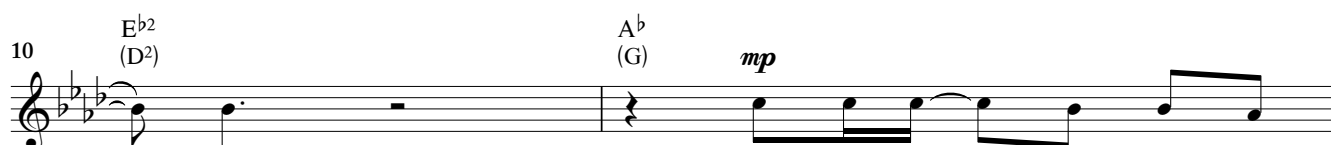
—  
—

How could I doubt — His ten - der  
O, the sure - ness of His



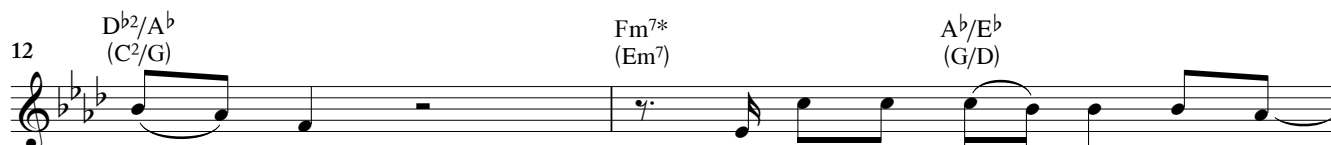
mer - cy,  
prom - ise

Who through life has been my —  
in the tri - umph of His —



— guide?  
— blood.

All the way — my Sav - ior  
When my spir - it, clothed, im -



leads — me,  
mor - tal,

and cheers each wind - ing path I —  
wings its flight — to realms of —



— tread,  
— day,

and gives me grace — for ev - 'ry  
this my song — through end - less

\*opt A<sup>b</sup> (G) through whole measure 1st time

16  $E^b_{sus}$  (Dsus)  $B^b m^{7(4)}$  (Am<sup>7(4)</sup>)  $D^b maj^7/A^b$  (Cmaj<sup>7</sup>/G)  $E^b_{sus}$  (Dsus)

tri - al, feeds me with the liv - ing Bread. You  
a - ges: "Je - sus led me all the way.

19 Play 2nd time only  $D^b_2$  (C<sup>2</sup>)  $E^b_{sus}$  (Dsus)  $D^b_2$  (C<sup>2</sup>)  $A^b/C$  (G/B) **CHORUS**

Je - sus led me all the way!" You lead me, and

22  $E^b_{sus}$  (Dsus)  $D^b_2$  (C<sup>2</sup>)  $A^b/C$  (G/B)  $E^b_{sus}$  (Dsus)

keep me from fall - ing. You car - ry me close to Your heart, and

25  $B^b m^{7(4)}$  (Am<sup>7(4)</sup>)  $A^b$  (G)  $E^b_{sus}$  (Dsus)

sure - ly Your good - ness and mer - cy will

27  $B^b m^{7(4)}$  (Am<sup>7(4)</sup>)  $A^b$  (G) 1.  $E^b_{sus}$  (Dsus) 2.  $E^b_{sus}$  (Dsus) *D.S. al Coda*

fol - low me. me. You

⌘ CODA

21  $E^b_{sus}$  (Dsus)  $B^b m^{7(4)}$  (Am<sup>7(4)</sup>)  $A^b$  (G)  $E^b_{sus}$  (Dsus)

me, will fol - low me.

24  $A^b$  (G)  $D^b_2/A^b$  (C<sup>2</sup>/G)  $A^b$  (G) *p*

All the way my Sav - ior

27  $D^b_2/A^b$  (C<sup>2</sup>/G)  $A^b$  (G)  $D^b_2/A^b$  (C<sup>2</sup>/G)  $A^b$  (G)

leads me, All the way my Sav - ior

31  $D^b_2/A^b$  (C<sup>2</sup>/G)  $A^b$  (G) *molto rit.*  $D^b_2/A^b$  (C<sup>2</sup>/G)

leads me.