

YOU NEVER LET GO

MATT REDMAN AND BETH REDMAN

Even though I walk through the valley
Of the shadow of death
Your perfect love is casting out fear
And even when I'm caught in the middle
Of the storms of this life
I won't turn back, I know You are near

And I will fear no evil
For my God is with me
And if my God is with me
Whom then shall I fear
Whom then shall I fear

Oh no, You never let go
Through the calm and through the storm
Oh no, You never let go
In every high and every low
Oh no, You never let go
Lord, You never let go of me

And I can see a light that is coming
For the heart that holds on
A glorious light beyond all compare
And there will be an end to these troubles
But until that day comes
We'll live to know You here on the earth

Yes, I can see a light that is coming
For the heart that holds on
And there will be an end to these troubles
But until that day comes
Still I will praise You
Still I will praise You

Intro
Verse 1
Pre-Chorus
Chorus
Verse 2
Pre-Chorus
Chorus
Bridge
Bridge
Chorus
Chorus

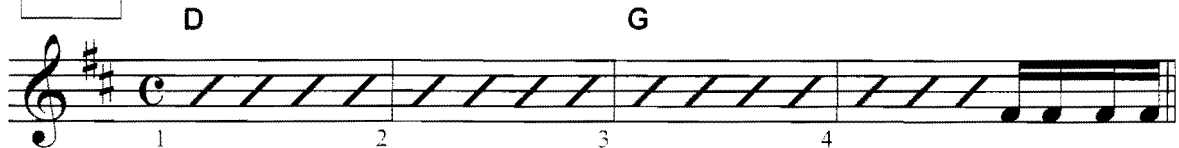
Closer:
51-Out

You Never Let Go

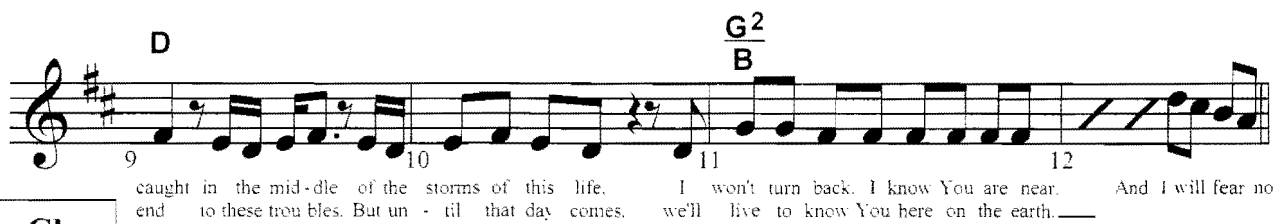
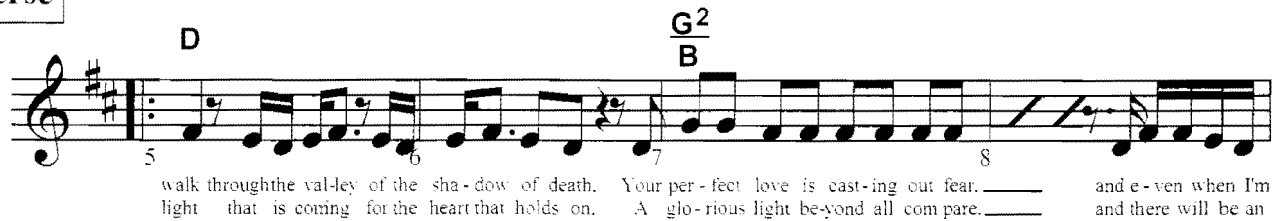
(Key of D)

Words and Music by Matt & Beth Redman
Arranged by Brittney Moore

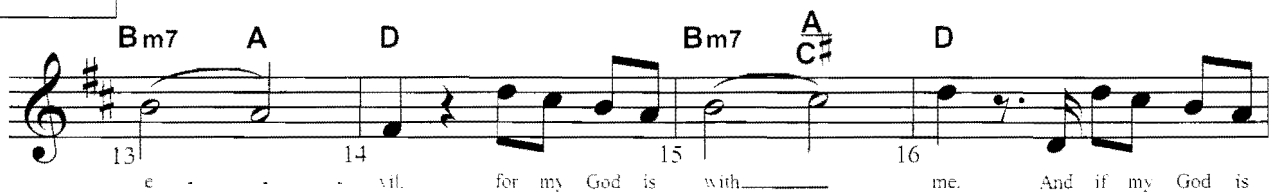
Intro



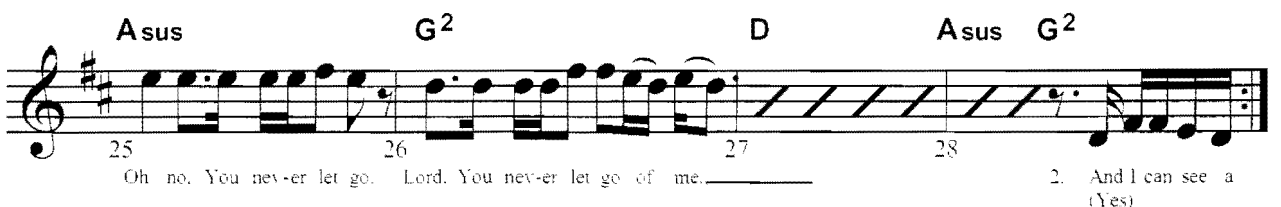
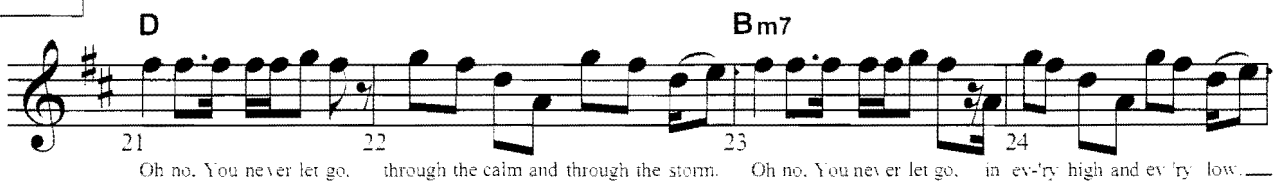
Verse



Pre-Chor



Chorus



© 2005 Thankyou Music (PRS) (Admin. worldwide by EMI CMG Publishing
excluding the UK and Europe, which is administered by kingsway songs.com
All rights reserved. Used by permission. CCLI Song No. 4774 00

Bridge

D Bm7

29 30 31 32

light that is coming for the heart that holds on. And there will be an end to these troubles, but un-til that day comes,

Asus G² F#m G² Asus

33 34 35 36

still I will praise You, still I will praise You. Yes, I can see a

Bridge

Bass on 16th's

D Bm7

37 38 39 40

light that is coming for the heart that holds on. And there will be an end to these troubles, but un-til that day comes,

Asus G² F#m G² Asus

41 42 43 44

still I will praise You, still I will praise You.

Chorus

Breakdown

D Bm7

45 46 47 48

Oh no, You never let go, through the calm and through the storm. Oh no, You never let go, in ev'ry high and ev'ry low.

Asus G² Drum Fill D Asus G²

49 50 51 52

Oh no, You never let go, Lord, You never let go of me.

Chorus

Rock Out!

D Bm7

53 54 55 56

Oh no, You never let go, through the calm and through the storm. Oh no, You never let go, in ev'ry high and ev'ry low.

Asus G² D Asus G² D

57 58 59 60 61

Oh no, You never let go, Lord, You never let go of me. You never let, You never let go of me.

YOU NEVER LET GO

MATT REDMAN AND BETH REDMAN

INTRO: D G

VERSE 1: D
Even though I walk through the valley of the shadow of death

G2/B
Your perfect love is casting out fear

D
And even when I'm caught in the middle of the storms of this life

G2/B
I won't turn back, I know You are near

PRE-CHORUS: Bm7 A D Bm7 A/C# D
And I will fear no e - e - vil, for my God is wi - th me

Bm7 A D A
And if my God is wi - th me, whom then shall I fear

G2
Whom then shall I fear

CHORUS: D
Oh no, You never let go through the calm and through the storm

Bm7
Oh no, You never let go in every high and every low

Asus
Oh no, You never let go

G2 D Asus G2
Lord, You never let go of me

VERSE 2: D
And I can see a light that is coming for the heart that holds on

G2/B
A glorious light beyond all compare

D

And there will be an end to these troubles

But until that day comes

G2/B

We'll live to know You here on the earth

*REPEAT:
PRE-CHORUS
CHORUS*

D

BRIDGE: Yes, I can see a light that is coming for the heart that holds on

Bm7

And there will be an end to these troubles

Asus

But until that day comes, still I will praise You

G2

F#m

G2

Asus

Still I will praise You

*REPEAT
BRIDGE:*

D

CHORUS: Oh no, You never let go through the calm and through the storm

Bm7

Oh no, You never let go in every high and every low

Asus

Oh no, You never let go

G2

D

1ST Time Only

[Asus G2]

Lord, You never let go of me

*REPEAT
CHORUS:*

Asus G2 D

You never let go of me